

ONELAN OmniServer. Installation/Commissioning Requirements (rev 2.3)

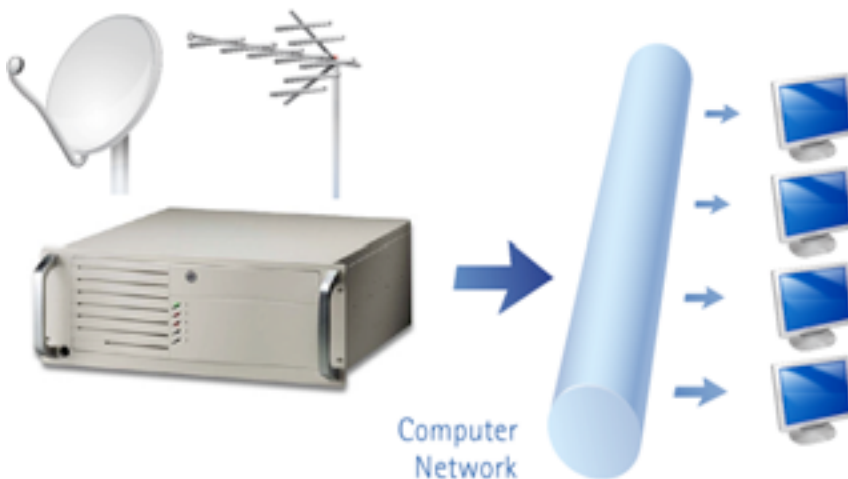
Contact Information

Site Contact Information	
• Installation Site Name	
• Contact Person	
• Job Title	
• Telephone Number	
• Email Address	
• Full Installation Address	

Omni Server Installation

A complete Omni Server install breaks down into the following components (optional):

Section	Component	Type	Location
1	TV Source (aerial, dish)	Hardware	Outside building
2	TV Server Appliance	Hardware	Server room
3	Video Library Server	Software	Server room
4	Duet Player	Software	Desktop



Section One

TV Source

Before the Installation a TV aerial or satellite dish needs to be installed and tested. If multiple feeds are required from the aerial or dish you will need a splitter/amplifier.

Required DVB TV signal: (-50dB to -55dB STR) & (>28dB C/N) & (<2 x 10⁻⁴ BER)
 Required DVB SAT signal: (-60dB to -75dB STR) & (>28dB C/N) & (<2 x 10⁻⁴ BER)

Please fill in the table below with details of your TV Source:

Information	Example	Your Details
Digital Aerial	Installed with 6-way amp Signal: 50db	
Satellite Dish	Sky dish installed with multi-switch	
Other Source	DVD Player / scan converter	

Section Two

Omni Server Appliance

The TV Server Appliance requires mains power, a Gigabit LAN connection and a TV source. The source is normally an aerial and/or satellite dish located on the roof of a building.

You will require a coax cable to connect the aerial or dish to the TV Server, so it is important to install it within the same building. Ideally, the TV Server should be located within a server room or other secure room with air conditioning and access to a keyboard and screen for the installation process.

Entries shown in **bold** are **mandatory**.

Information	Example	Your Details
IP Address	192.15.12.145	
Subnet mask	255.255.255.0	
Gateway	192.15.12.1	
DNS	192.15.12.2	
Hostname	Omni Server	
Room	Main Server Room	
Cabinet Location	Cab B4, TOP	
Patch Panel Port	D5	
Switch Port	Switch2, Port 16	
TV Source	Below rack	

Section Three

Video Library Server

The Video Library Server is a software application that is installed on a Windows computer with a large amount of storage (300GB or more is recommended).

The system should be fully installed and working before the TV Server is installed. It doesn't need to be located near the TV Server, as long as it can be reached across the LAN.

Information	Example	Your Details
IP Address	192.15.12.146	
Username	localadministrator	
Password	P4%%w0rd	
Hostname	Videolibrary	
Data Path	D:\	
Location	Main Server Room	
Tech Spec	3Ghz, 2GB, 500GB	
O/S	Windows 2003	

Section Four

Onelan Duet Player

The Player is desktop software installed on all PCs that are allowed to view the TV channels. It is compatible with Microsoft Windows 2000, XP and Vista.

While the software can be installed at anytime, it is advisable to have a typical workstation available to test software functionality and features during the Omni Server installation.

Information	Example	Your Details
IP Address	192.15.12.147	
Username	localadministrator	
Password	P4%%w0rd	
Location	Reception	

Section Five

Existing Infrastructure

This section is about your existing network and will help identify any potential issues and workarounds before the install takes place.

Information	Example	Your Details
Network topology	Core only/star with remote user switches	
Key equipment	Switch 5400zl core & 10 x HP Procurve 2324	
Wireless Access Points	DWL-2100AP	
Network speed	100Mbit to the desktop, 1Gbit between switches	
Multicast routing	IGMP snooping & PIM-SM	
Use VLANS?	Yes/no	
Internet connection method	ADSL router / SDSL modem & dedicated firewall	
IPTV Receiver ports	100mbit FULL duplex	

This document covers the specification for the installation of Onelan IPTV Gateways supplied to Red Solutions on behalf of Resellers.

The following information to be provided to Red Solutions (5 working days):

Customer Location	
Address:	
Post code	
Contact Name	
Phone number	
Date of installation	
Equipment to be installed	
Number of Terrestrial or Satellite RF Feeds	
Other installation requirements.	

Pre-visit Requirements

The following items are required before the IPTV servers can be installed.

Infrastructure	
Terrestrial or satellite antenna(s) installed and cabled to server room	
RF amplifier/splitter installed within 2m of IPTV servers	
6 x available outputs from RF amplifier/splitter per IPTV server	
4U of rack space for each IPTV sever.	
Any required hardware to support the IPTV server in rack cabinet	
Mains power supplied on an IEC C13 (kettle) lead to each IPTV server.	
Live & patched network cable supplied to each IPTV server	
Rack drawing to be supplied to Red Solutions with equipment layout.	

Network specification	
Schools network to be configured for multicast routing and IGMP	
Full IP details to be supplied before visit (Address, subnet, router, DNS)	
A networked PC for testing - Red Solutions will install one PC player for testing	

Installation Testing and Training

Red Solutions will carry out the following tasks:

Install the IPTV server(s), connect RF cables. **Max of one gateway per working day.**
Configure the IPTV server(s) with the IP details supplied.
Confirm that the IPTV server is multicasting onto the network.
Test streams can be received by the test PC.
Red Solutions will give the local IT contact basic training on how to use the IPTV server.

Red Solutions standard terms and conditions for installation.

- Red Solutions rates are £800 per day Monday to Friday and are based on the following.
- Standard day start time on site from 9.30 and end time 5.00pm. Additional; hours outside of these times will be charged at current hourly rates.
- These costs cover only England/Wales and not Scotland.
- If site visit is cancelled within one week of installation a cancellation fee will be payable of £100.
- Problems on site due to customer delays or installation problems causing delay will be charged at our hourly rate or daily rate if longer.
- Any cables or parts that are used on site supplied by Red Solutions will be chargeable.
- All services are supplied excluding VAT at the current rate.