

2011

Red Solutions Onelan Training Manual

This document is designed to support the training session delivered by Red Solutions. It will assist you with the day to day operation of the Onelan Net Top Box.

red solutions

15:02:54

ITV Case Study

Dolphin Media & Design have found that the combination of a dnp GWA large optical TV studio screen, rear projected from a Christie three-chip DLP projector is starting to pay handsome dividends — throughout the entire ITV network.

SKY NEWS Thursday 15 Feb 2007

LATEST be in trouble in the skies above Los Angeles. The jet's landing ge



Table of Contents

1. Connection.	Page 3
2. Layout Selection	Page 4
3. Preloaded Layouts	Page 4
4. Bespoke Layouts	Page 4
5. Content Types	Page 6
6. Uploading Content	Page 7
7. User Interface	Page 7
8. File Transfer Protocol	Page 8
9. Working With Playlists	Page 10
10. Adding Content to the Playlist	Page 10
11. Adding Folders to the Playlist	Page 11
12. Adding Special Items to the Playlist	Page 12
13. Delete and Re Order a Playlist	Page 13
14. Editing a Item in the Playlist	Page 13
15. Ad Hoc Content	Page 16
16. Ad Hoc User Account	Page 16
17. Ad Hoc Pages	Page 16
18. Ad Hoc Items	Page 17
19. Adding an Ad Hoc Item	Page 20
20. Ad Hoc Media Folders	Page 22
21. Ad Hoc Media Folders with FTP Access	Page 25
22. Schedules	Page 26
23. Default Schedule	Page 26
24. How to Create an Events Schedule	Page 27
25. How to Create a Future Schedule	Page 29
26. Override Schedule	Page 30
27. Layout Packages	Page 32
28. How to Create a Layout Package	Page 32

Connection

The Onelan Net Top Box (NTB) should be connected to your network. Your Network Administrator should provide you with an IP address.

1. Open up your web browser e.g. Internet Explorer
2. In the address bar type http:// followed by the IP address e.g. <http://192.254.1.1> and then press the return key.
3. A window will open asking for a user name and password. Enter your user name and password as provided by your network administrator. (See Fig. 1)
4. If you have not been provided with a user name and password you can use the default user name and password. This will log you on to the NTB with full administrator rights.
5. You can now add the IP address to your favourites list.

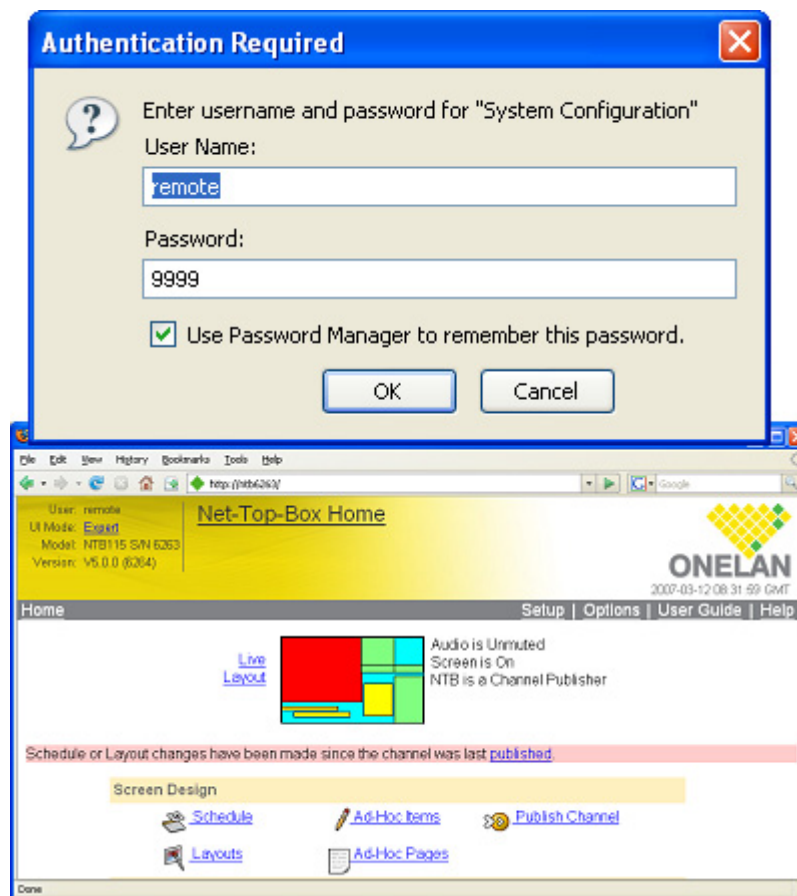


Fig. 1

Layout Selection

A Layout is the arrangement of rectangular zones to be shown on the display screen. Each zone has a playlist and each playlist contains the media that will play in that zone.

Pre-Loaded Layouts

The Onelan NTB comes with a selection of layouts pre-loaded. These are designed to allow you to quickly customise them with your own organisations logo and colour scheme.

1. From the homepage select "layouts".
2. From the list, select a layout best suited to your requirements. You can use the yellow audition button on the left hand side to preview the various layouts.
3. Once selected, the layout can then be edited.

Bespoke Layouts

If none of the pre-loaded layouts suit your requirements, you can create a bespoke layout. To do this you must be signed on with full administrator rights.

1. Select Layouts from the homepage menu. (see Fig. 2)
2. Click on 'Add Layout' tab, enter a name for the new Layout and click the 'Add' button. (see Fig. 3)

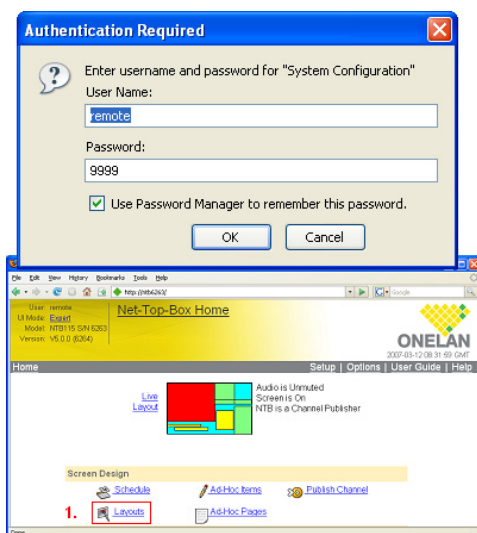


Fig. 2

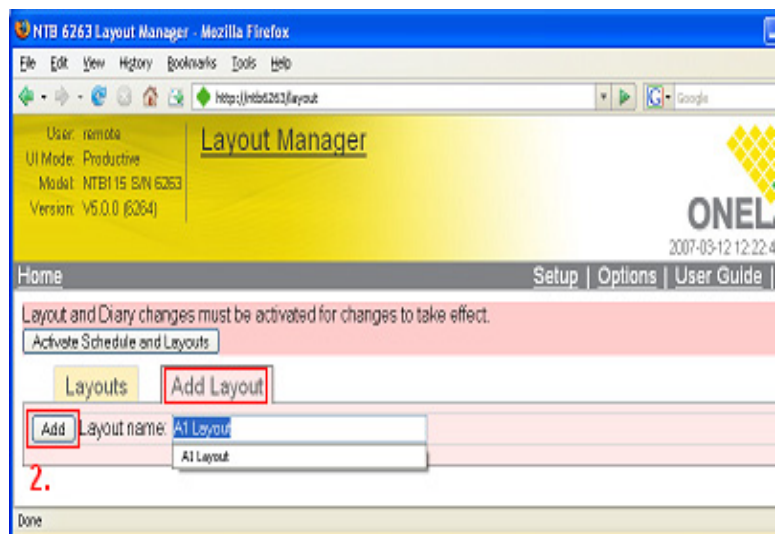


Fig. 3